

## Canto RoboFlow

# Automate digital asset routing, metadata processing and project communications with Cumulus.

Save time and reduce human-error with RoboFlow:

- Streamline workflows and reduce errors with powerful automation tools
- Ensure metadata values are always current with dynamic field population
- Stay informed with automatic email notifications

Canto RoboFlow enables your organization to automate sophisticated, multi-step digital asset processes.

### Auto-catalog digital assets

RoboFlow keeps Cumulus catalogs in sync with folders and ftp directories. When files are added, moved, renamed, deleted or modified, Cumulus users see the changes, instantly. Changes made in Cumulus can update remote file servers as well. Make CMS updates easier by letting RoboFlow deliver files where they're needed, using defined naming conventions. RoboFlow can even create new folder structures on file servers, perfect for the start of new projects.

### Email notifications that inform

With Canto's RoboFlow users can be notified at any or every step of a production pipeline. Recipient lists and email content can be defined in standard Cumulus fields to ensure notifications are relevant and current. Once an email has been sent, RoboFlow can change an asset's status and continue performing other processing actions.

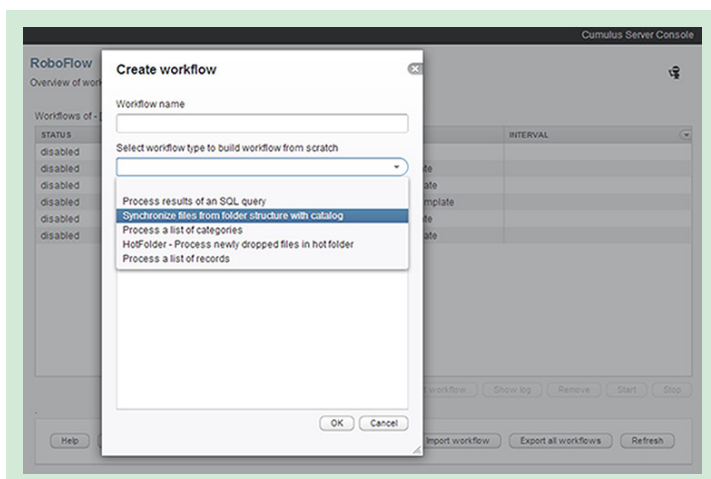
### Dynamic metadata processing

RoboFlow understands a basic scripting language that includes variables. For example, a RoboFlow workflow can reference

### Features Included

- Automation of multi-step productions
- Seamless integration with Cumulus
- Creation of file structures on file servers

Canto RoboFlow perfectly complements the power of the Cumulus Scheduler, offering a technical team a total production automation.



RoboFlow allows Cumulus administrators to easily analyze incoming content, set up workflow triggers, approvals and route assets through a custom business process.

### Contact:

U.S. +1 (415) 495-6545  
E.U. +49 (0) 30 390 485-0  
info@canto.com  
Canto.com

the current date, time, or a given metadata value. Combined with basic math and control structure routing, the RoboFlow scripting language enables you to build file names or metadata values based on system and other variables.

### Cumulus category tracking

If you've ever wanted an easy way to archive or otherwise work with all files associated with a completed project, RoboFlow offers a solution. Using values in category metadata, RoboFlow can process all associated records and files. Simply set a category metadata value to "Ready for Archive" and RoboFlow takes over. Files are moved where they need to go, and records are updated to reflect the change.

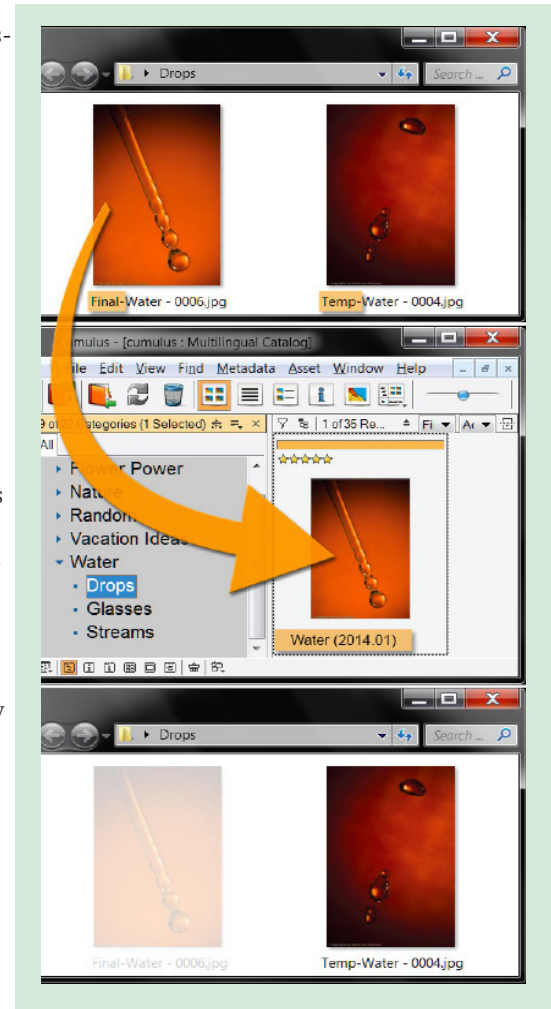
### Import/export metadata

Metadata from external systems, such as inventory or accounting systems, can be refreshed in Cumulus with automatic up-

dates managed by RoboFlow. Cumulus users see up-to-date metadata all day long, avoiding production errors. RoboFlow reads multiple, partial or calculated column values so complex spreadsheets can be used for metadata exchange. Need to have Cumulus metadata flow into other systems? Not a problem, RoboFlow creates export files at defined intervals and standard text files, XML and SQL-ready records can be created.

### Global "smart" drop folders

Using RoboFlow, a single file server directory can become your organization's global "drop folder". Simply define the rules for each auto-catalog operation and experience the power of RoboFlow. Use file naming to trigger specific handling options. With smart auto-cataloging, works-in-progress aren't cataloged until ready, and files don't have to be manually moved.



In this example, RoboFlow watches a folder (top) and auto-catalogs any file it finds that contains "Final" in the name. "Final" is stripped from the cataloged file's name, and the cataloging date is added. During cataloging, RoboFlow can move the file to another location or leave it in place.

### About Canto

Canto is driven by delivering digital content more intelligently. This has made the company a global leader in the digital asset management community.

By always putting the focus on its users, Canto delivers scalable software and services that match customers' demands. More than one million users from a wide spectrum of market segments have trusted Canto's expertise since the company's founding in 1990. Canto is based in San Francisco (USA), Berlin and Linden (Germany) and serves a worldwide customer base in close cooperation with its worldwide partner network. For more information visit [canto.com](http://canto.com).

### About Cumulus

Cumulus allows companies to easily organize, find, share and create digital content — on any platform. It helps customers protect their brand assets, ensure efficiency and ultimately improve their bottom line. Cumulus can be integrated with popular applications, and customized to support and streamline customer workflows. Canto's worldwide partner network offers many integrations and enhancements for Cumulus, enabling Canto to deliver truly tailored solutions. During its 20 year history, more than one million users from a wide spectrum of market segments have chosen Cumulus.