

# Canto Cumulus®

## HELIOS Companion

Automatically Synchronizes  
HELIOS EtherShare and  
PCShare Volumes and  
Cumulus Catalogs

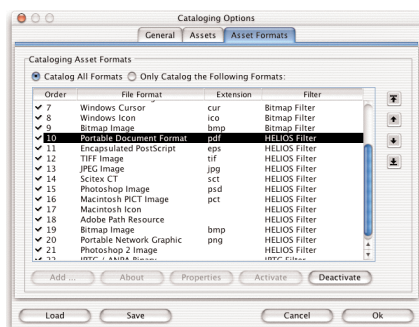
### Technology Background

Cumulus HELIOS Companion interprets OPI messages transmitted by the HELIOS ImageServer and carries out the corresponding Cumulus actions. HELIOS Companion consists of these modules:

- HELIOS Synchronizer
- HELIOS Filter
- HELIOS AssetProcessor
- HELIOS Companion Setup

All modules are installed on the HELIOS ImageServer machine. A Cumulus Server also needs to be installed on this machine or networked via a TCP/IP connection.

The **HELIOS Synchronizer** is responsible for the automatic comparison and synchronization of monitored folders and Cumulus catalogs as well as for employing specific cataloging preferences, e.g. filter settings, to each monitored folder. HELIOS Synchronizer can be started and controlled by the HELIOS Companion Setup as well as per shell or telnet commands. Ideally, the



Individual filters can be activated and deactivated and other priorities can be set in the Cataloging Options dialog.

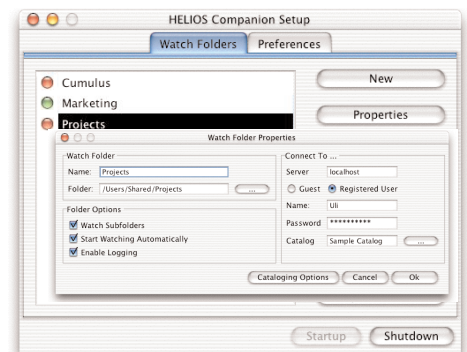
HELIOS Companion fulfills the needs of HELIOS users who want to combine the power of Canto's Digital Asset Management system with HELIOS' fast and reliable file and print server and server-based image replacement solutions. HELIOS Companion simplifies your task as it automatically synchronizes HELIOS volumes and Cumulus catalogs when you store new files or make changes to existing files in the HELIOS file system. This maintains a familiar user workflow and eliminates the need for manual cataloging. Plus, if you are using Cumulus Publishing Server Solution or Business Server Solution, cataloged assets can be dynamically published to the Web for customers to review or download.

HELIOS Synchronizer can be integrated into the HELIOS Service Controller that centrally starts, stops and monitors all HELIOS Services. It interprets all messages on changes of hard disc contents transmitted by the HELIOS ImageServer and carries out the corresponding Cumulus actions according to each folder's specific cataloging configuration. Files that are newly applied in the file system are automatically cataloged into Cumulus catalogs and new folder categories are applied, if necessary. If directories or files are changed, renamed, moved or deleted, the related Cumulus records or categories will be updated accordingly. The cataloging process is directly carried out by the Cumulus Filters at the server.

With the 'Pause and Resume' functionality, the monitoring process for every single monitored folder can be paused while other operations are in progress. This enables maintenance work on assigned catalogs or Cumulus servers even while users are updating their files on the watched EtherShare or PC Share volume.

The **HELIOS Filter** creates thumbnails and previews for all file formats supported by HELIOS ImageServer and extracts further metadata. Supplemental information can be added later with a Cumulus Client or Internet Client Pro. XPPV files for both Quark Xpress and InDesign documents are also supported.

The **HELIOS AssetProcessor** allows Cumulus Client users to convert cataloged assets between all file formats, color spaces and compressions supported by HELIOS ImageServer. Rotation, flipping and cropping are also possible. With a Cumulus Internet Solution all functions are also available in the Internet, e.g. prior to a download. Furthermore, ICC profiles to convert cataloged assets within the Cumulus Client or with one of the Internet Options are also supported.



In the HELIOS Companion Setup the relations between monitored folders and Cumulus catalogs as well as other settings are configured.

The **HELIOS Companion Setup** controls all the features of HELIOS Companion. This module handles the setup of monitored folders and specific cataloging preferences. These preferences or configuration files are stored in text format and can be modified with a text editor at remote machines as well.

## Key Features and Benefits

### Automatic Synchronization of HELIOS Volumes and Cumulus Catalogs

Records and categories are automatically created in Cumulus as soon as files are saved in monitored folders on the HELIOS server. Furthermore, if the original files are edited, renamed or moved, the Cumulus records will also be automatically and transparently updated, enhancing workflow efficiency and reducing administrative tasks.

### Support of the File Formats Provided by HELIOS ImageServer

In addition to the file formats already supported by Cumulus, HELIOS Companion supports all file formats provided by the HELIOS ImageServer.

### Exception List and Pre-filling of Information for Cataloging

An exception list lets users exclude particular assets from being cataloged as defined, for example by file name, format or creating application. Users can pre-fill information while cataloging and updating records, thereby ensuring that mistakes that may occur when this is done manually are avoided. This process also increases workflow efficiency as a lot of time is saved.

### System Requirements:

- Mac® OS X version 10.3, Solaris 8, Linux x86 (2.4 kernel – SuSE, Red Hat)
- SUN Java 1.4.1 with latest updates or higher
- Cumulus Workgroup or Enterprise version 6 or higher
- HELIOS EtherShare 3.1, HELIOS ImageServer 2.5  
Optional: PCShare 3.1, PDF HandShake 2.1

### Convert Cataloged Assets

With HELIOS Companion, a Cumulus Client can be used to convert cataloged assets into all file formats, color spaces and compressions supported by the HELIOS ImageServer. ICC profiles are also supported. With a Cumulus Internet Solution (e. g. Web Publisher Pro) all functions are also available in the Internet. Web users can also transmit individually converted, rotated, flipped or cropped files to their machine.

### Reduction of Network Load by Cataloging at the Server

The cataloging process, including reading of metadata and creation of thumbnails, is all performed directly on the server, reducing network load from the transfer of files to the client machine and improving response time.

### Manual Synchronizing

If an already existing folder is newly applied into the list of the folders to be synchronized, it can be manually synchronized first – this way all files stored in the directory are immediately cataloged. This function can also be activated at a later point in time.

### Options:

Cumulus Internet Options (such as Web Publisher Pro, part of the Publishing Server Solution) to publish cataloged assets to the Internet with dynamic Web pages for viewing or downloading the assets. A Web Server or a Web Application Server is required for these Options.

### Publishing Production Data to the Web

With a Cumulus Internet Solution (e. g. Web Publisher Pro) cataloged assets can be dynamically published to the Web, giving customers easy access to their production files. E-commerce solutions can also be created so that customers can download individually converted, rotated or cropped files directly to their machine without the need for additional manual work on behalf of a service bureau or printer.

### More Information:

Fully-functional demo versions of Cumulus and the Cumulus Options are available on Canto's website.

For more information on Cumulus, the Cumulus Options and all Canto services please visit Canto's website at **[www.canto.com](http://www.canto.com)**